



Project-ware Overview:

ALL Edits Report & QA Tool

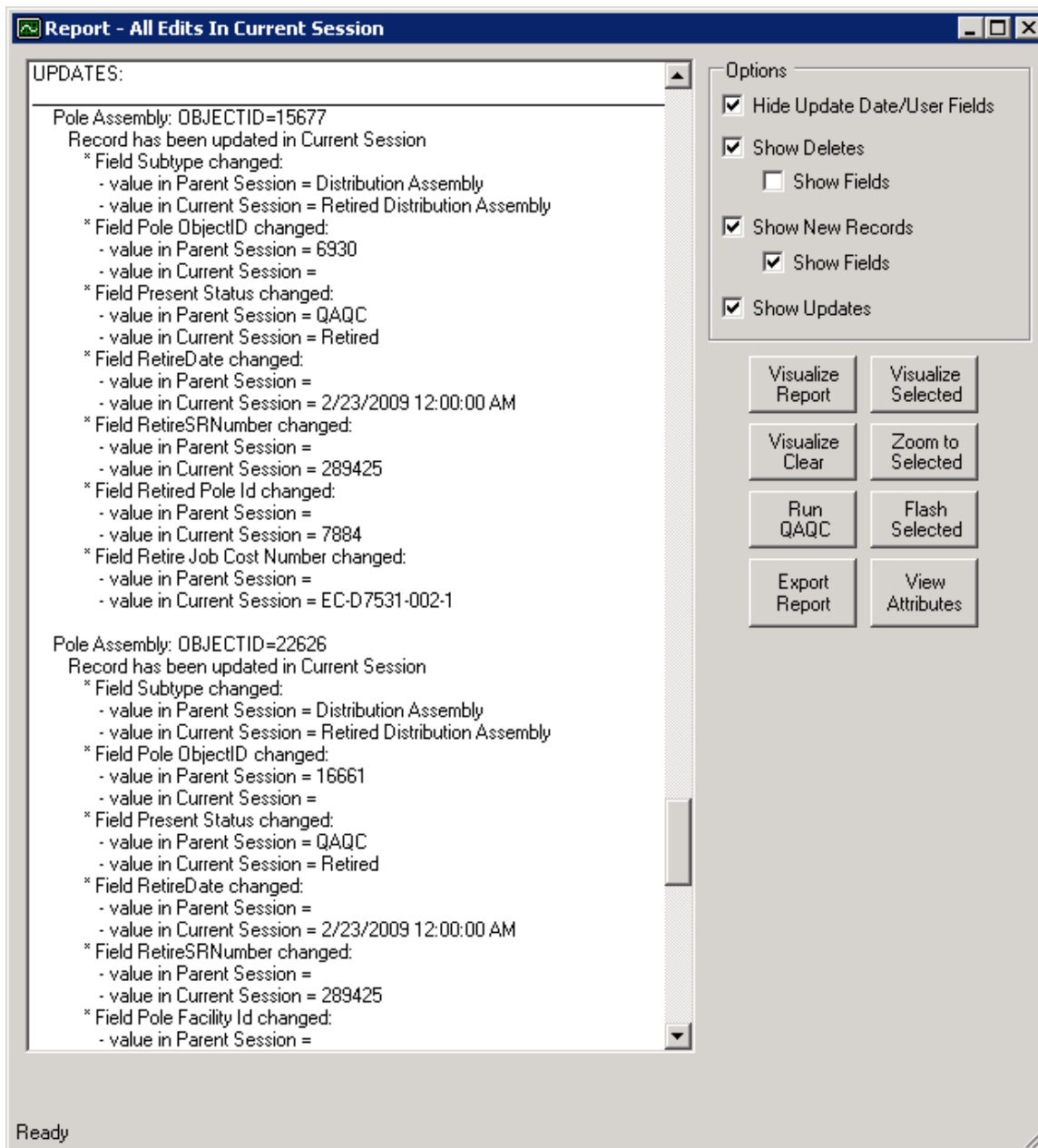
Document v1.2

Updated 2/24/2009

Proprietary and Confidential

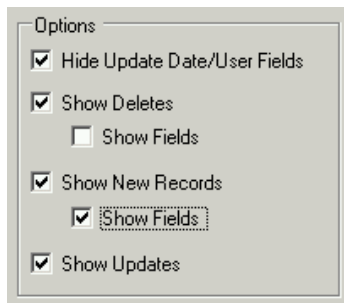
1 Overview

This document details out the implementation of the SSP All Edits Reporting and QA Tool also known as the All Edits Report. This tool provides ESRI users with total control and tracking capabilities of the edits that are made within each session/version in a geodatabase. It accomplishes this by analyzing a version before it has been posted to create a textual and graphical report of all edits (additions, changes, and deletions) that have occurred within the version. The following picture shows the main user interface for the All Edits tool:



The All Edits tool provides the following major components:

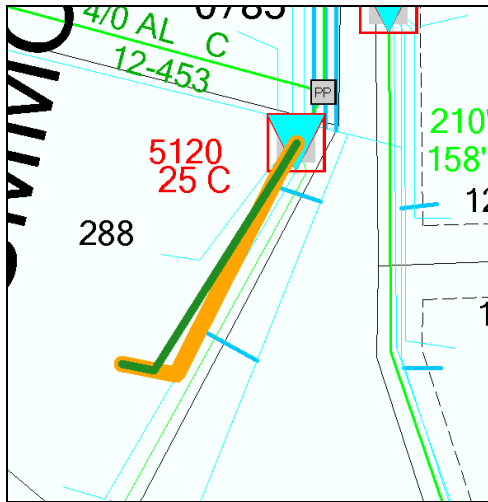
- **Text-based Edits Report:** The tool generates a text based report showing the details of all edits that have occurred within the session/version.
 - Deletes are listed with record type (pole, transformer, etc), the object id of the deleted record, and optionally all of the non-spatial attributes of the deleted record.
 - Additions are shown with the record type, the object id, and optionally all of the non-spatial attributes of the added record.
 - Updates are shown with the record type, the object id, a listing of the fields that were changed, and the values of both the original and updated value.
- **Interactive Review Options to Facilitate Effective QA:** The tool includes an options section with many different options to allow the QA personnel to quickly and effectively review the edits listed in the report. Toggling the checkboxes updates the textual report in real time showing the user only what they want to review. This can be very useful when QA'ing a session against a written service request or work order.



Options

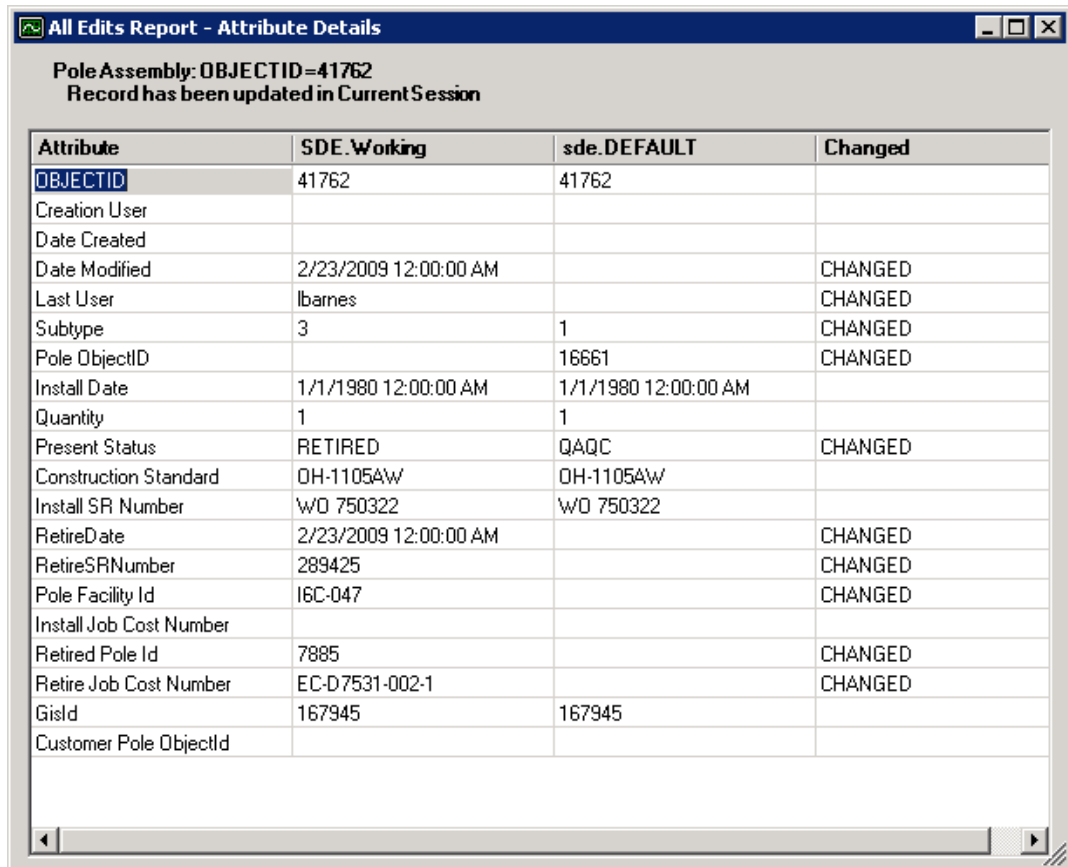
- Hide Update Date/User Fields
- Show Deletes
 - Show Fields
- Show New Records
 - Show Fields
- Show Updates

- **Visualize Selected:** After a user has selected an added, deleted, or updated feature on the textual report, they can then click the Visualize Selected button to visualize only the selected edit. This allows the QA user to drill down to a more detailed record level. If the geometry of the feature was updated, the original geometry is shown in orange with the new geometry shown in green:



- **Visualize Clear:** This function simply clears the current visualized graphics off of the map so that only the GIS features are shown once again.

- **Report QA and Storage:** The All Edits tool provides additional functions to assist with the QAQC of the edits as well as the historical storage of the report for audit and informational purposes:
 - **View Attributes:** The view attributes function shows the user a side by side view of the attributes in the current session and the attributes in the parent session. For updated records this can be used to further evaluate and QA the changes in the record. For added or deleted records, this can be used to further identify attributes of a feature that was added or deleted within the version. The following picture shows an example of the attributes screen for an updated record:

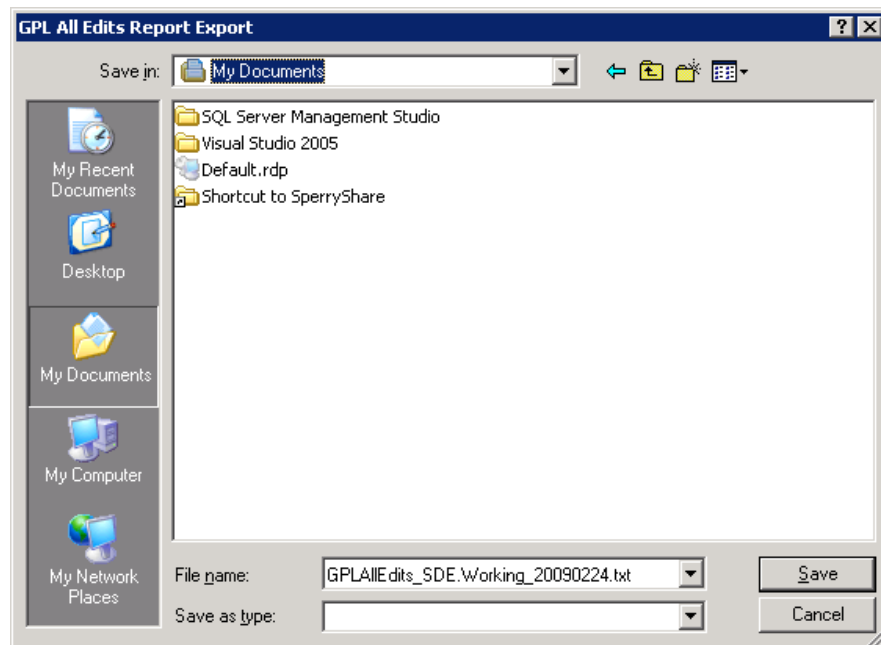


Pole Assembly: OBJECTID=41762
Record has been updated in Current Session

Attribute	SDE.Working	sde.DEFAULT	Changed
OBJECTID	41762	41762	
Creation User			
Date Created			
Date Modified	2/23/2009 12:00:00 AM		CHANGED
Last User	lbames		CHANGED
Subtype	3	1	CHANGED
Pole ObjectID		16661	CHANGED
Install Date	1/1/1980 12:00:00 AM	1/1/1980 12:00:00 AM	
Quantity	1	1	
Present Status	RETIRED	QAQC	CHANGED
Construction Standard	OH-1105AW	OH-1105AW	
Install SR Number	WD 750322	WD 750322	
RetireDate	2/23/2009 12:00:00 AM		CHANGED
RetireSRNumber	289425		CHANGED
Pole Facility Id	I6C-047		CHANGED
Install Job Cost Number			
Retired Pole Id	7885		CHANGED
Retire Job Cost Number	EC-D7531-002-1		CHANGED
GisId	167945	167945	
Customer Pole ObjectID			

- **Run QAQC:** This is an optional button that can be turned on for customers using *Telvent Miner & Miner's* ArcFM tools. The Run QAQC function first makes a feature selection of all features that were edited on the map. It also handles ensuring that all objects related to features are included in the feature selection by way of the related map feature. The function then taps directly into the TM&M QAQC tool to execute all configured QA rules against the selected data. This is an easy way to ensure you have run the M&M QAQC tool on all edits within the current session.

- **Export Report:** The final function of the tool is the Export Report button. Once the user has completed the QA of the current session, many organizations have a requirement to capture/store a report on all edits performed in a given session/version. Clicking this button will establish a meaningful name for the report including the version name and the date. This name will be presented to the user in a standard SAVE dialog. The user can then browse to any location and click Save to create a formatted text-file with all of the details from the All Edits report. By default the exported report will show ALL attributes of both added and deleted records. This allows the organization to keep track of when edits occurred to the system, who performed the edits, and the exact details of the edit. This information can be crucial to organizations during any type of audit scenario when they need to determine when specific updates were made.



2 Implementation Description

The SSP All Edits Reporting and QA Tool can typically be implemented for any customer with minimal customizations. The customizations would include code updates that are specific to the customer's data model as well as the creation of a customer-specific MSI installer package for easy deployment.

The code for this tool is considered "project-ware" which means that SSP will deliver a custom implementation of the All Edits Reporting and QA Tool to the customer but that SSP retains the right to implement this tool at other clients. This allows SSP Innovations to implement this tool at various clients for a cost which is less than the original development cost from scratch. However, this tool is not considered a product and there is no formal license or product support included with the purchase. There is also no ongoing product maintenance fee of any kind.

The All Edits Reporting and QA Tool can typically be updated for a new installation with a two week turnaround from the execution of a contract. This implementation would also include up to a half day training session on the All Edits tool via a web meeting to be scheduled at the customer's convenience. Any future support of this tool can be handled on an as-needed hourly basis or via a custom support agreement between the customer and SSP Innovations.